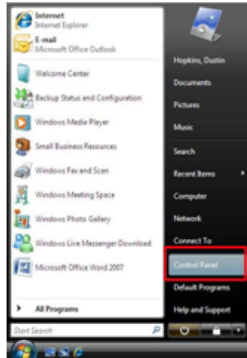


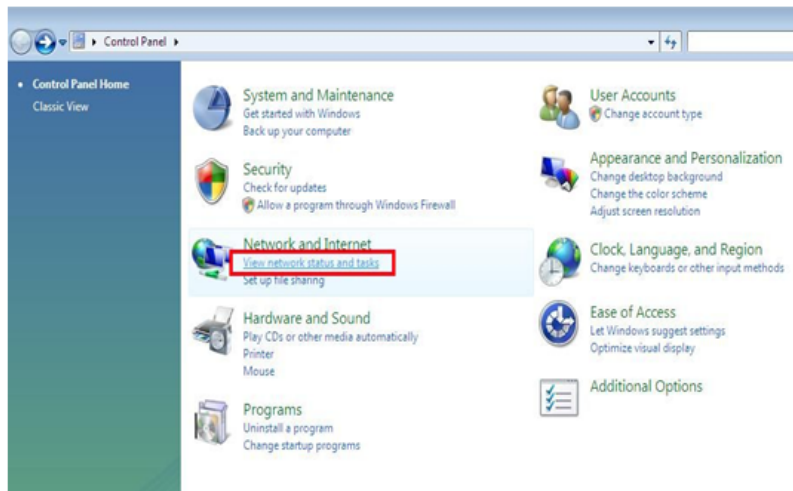
Disabling IPv6 in Windows Vista

Support for Internet Protocol version 6 (IPv6), a new suite of standard protocols for the Network layer of the Internet, is built into the latest versions of Microsoft Windows Vista. Williams College does not currently support IPv6 and it can cause connectivity problems on our network. We strongly encourage student with Windows Vista installed on their computer disable IPv6 to prevent temporary network disconnections. Follow the steps below to disable IPv6:

Click **Start** and then **Control panel**



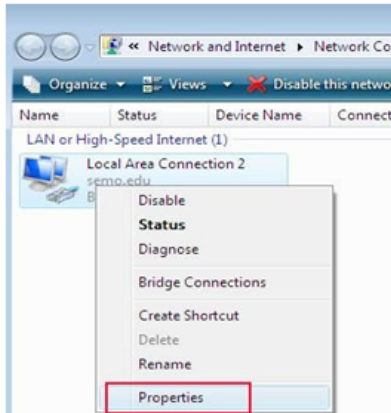
In the **Control Panel**, click **View network status and tasks**



Click **Manage network connections** on the left-hand menu

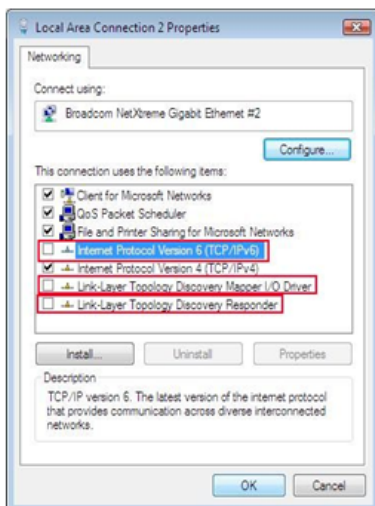


Right-click the **Local Area Connection** and choose **Properties**



In the **Local Area Connection Properties**, uncheck:

- **Internet Protocol Version 6 (TCP/IPv6)**
- **Link-Layer Topology Discovery Mapper I/O Driver**
- **Link-Layer Topology Discovery Responder**



Click OK and restart the computer